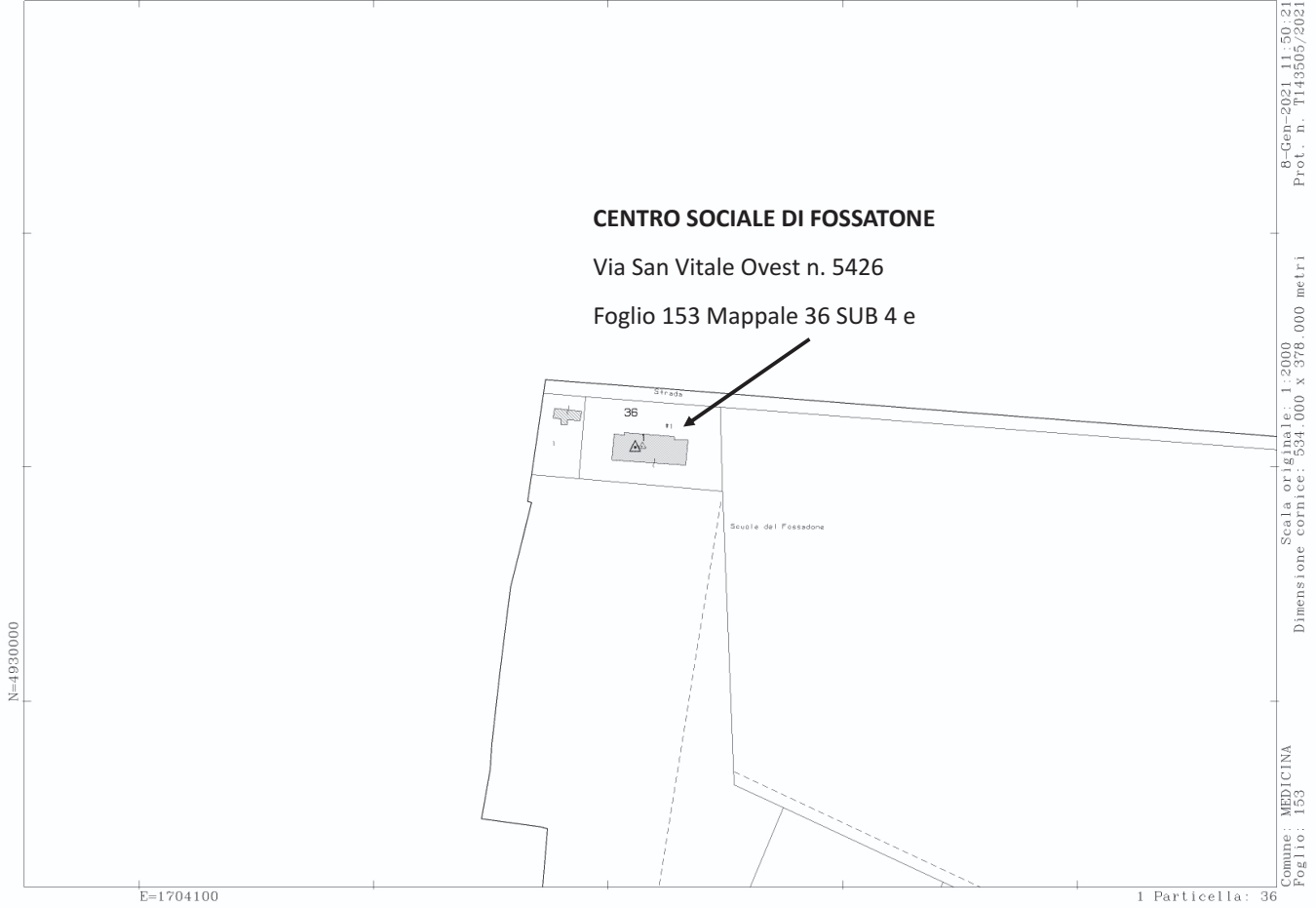


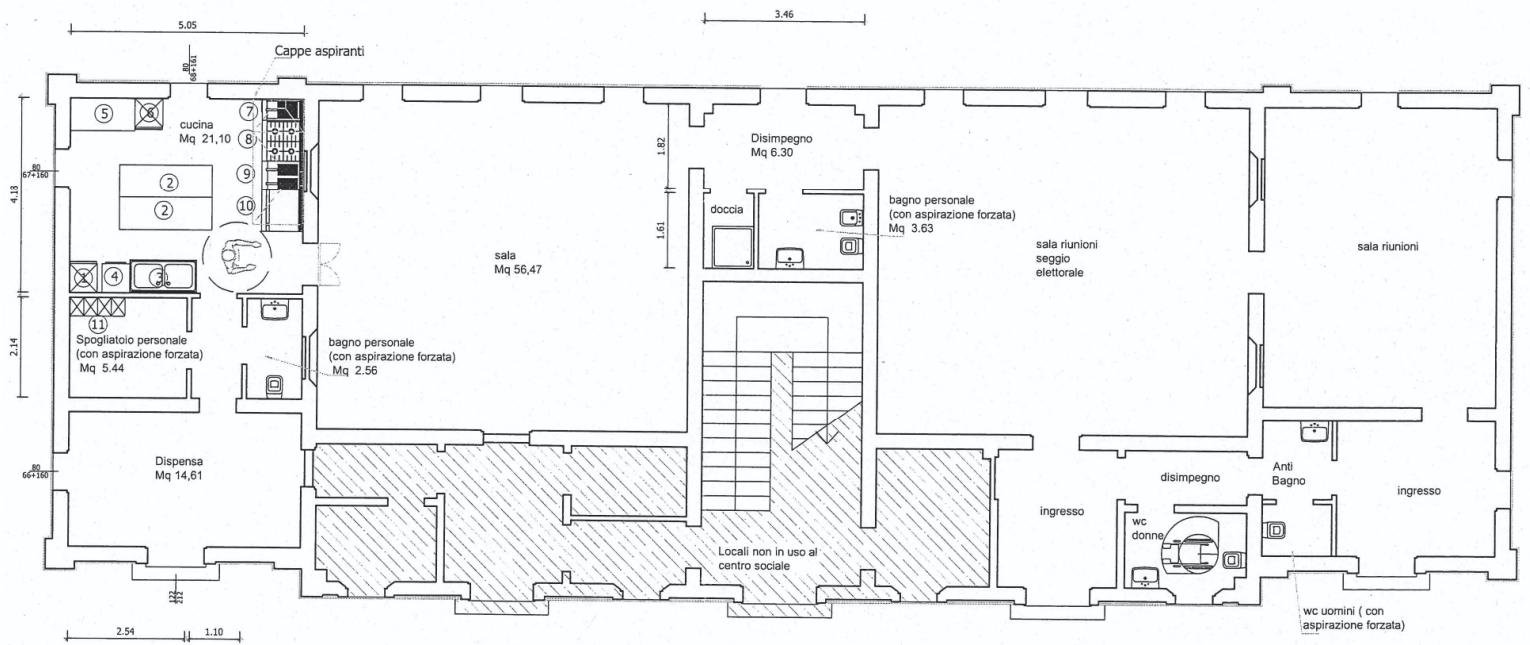
Direzione Provinciale di Bologna Ufficio Provinciale - Territorio - Direttore CIVOLANI MARIA RITA Vis. tel. esente per fini istituzionali



CENTRO SOCIALE DI FOSSATONE

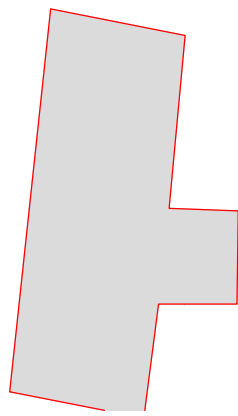
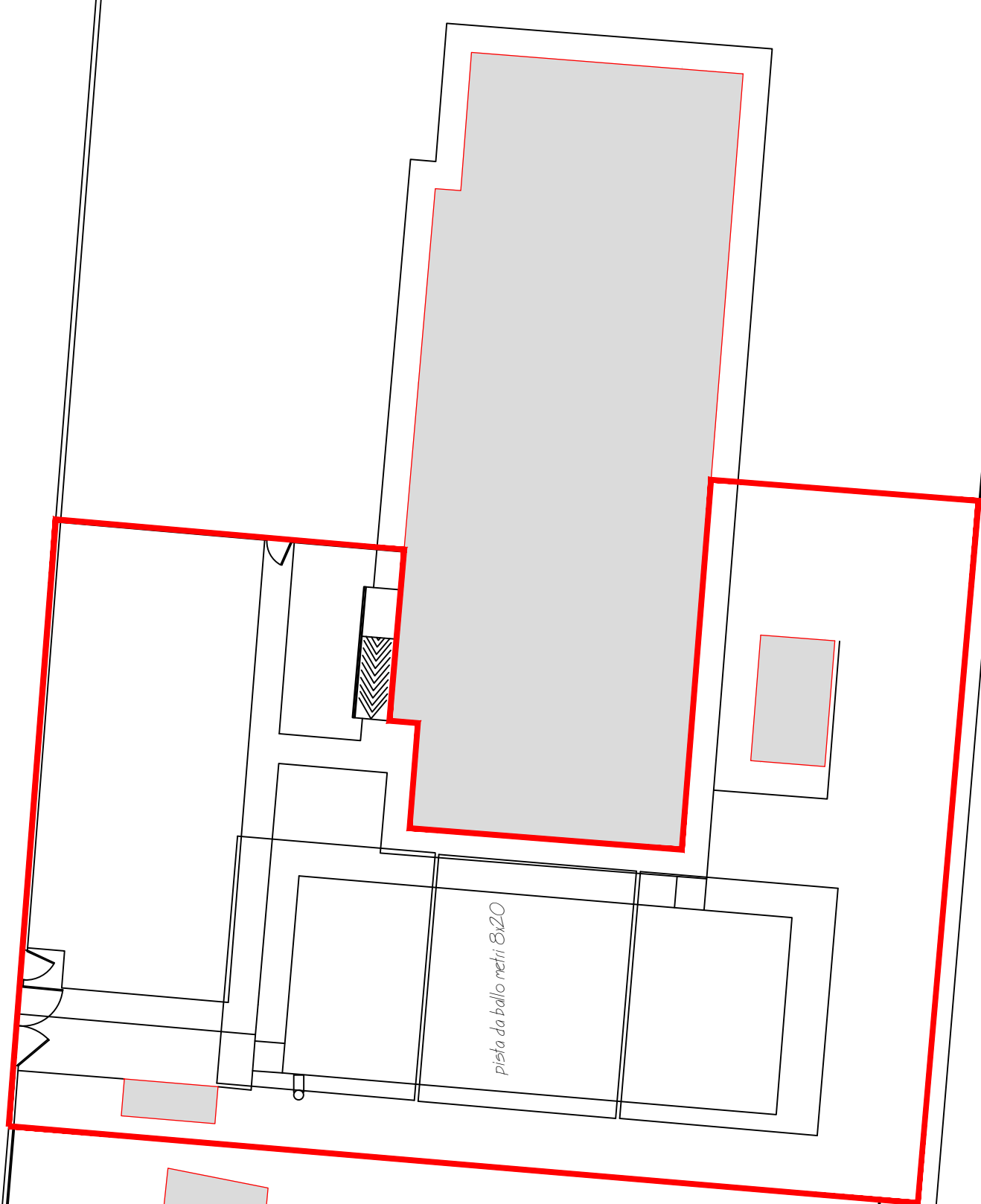
Via San Vitale Ovest n. 5426

Scala 1:100



AREA ESTERNA CENTRO SOCIALE

Via San Vitale



edificio ex ANAS